

YJC POWER

SOLAR MOUNTING SOLUTIONS

YJC POWER

www.yjc-sz.com 0755-89457249 yjc@yjc-sz.com

6F, Building 2, No.2 Baolong 4 Road, Longgang District, Shenzhen
No.17, Yang Chan Road, She County Economic Development Zone, Huangshan, Anhui

© YJC Technology Co., Ltd. All rights reserved. YJC Company is not liable for damages that may result from any information provided in or omitted from this publication, under any circumstances.
YJC Company reserves the right to make adjustments to this publication at any time, without notice or obligation.

V.04.2025

YJC Technology Co., Ltd.

TRACKS AND ACCESSORIES



Model: **GRD-R01**
Description: GRD-R01track



Model: **GRD-R02**
Description: GRD-R02track



Model: **GRD-IC-TYPE**
Description: GRD-Medium pressure in film



Model: **GRD-EC-TYPE**
Description: GRD-Film edge pressure



Model: **GRD-R03**
Description: GRD-R03track



Model: **GRD-R04**
Description: GRD-R04track



Model: **GRD-G3-IC**
Description: GRD-G3 Medium pressure



Model: **GRD-G3-EC**
Description: GRD-G3 Edge pressure



Model: **GRD-R05**
Description: GRD-R05track



Model: **GRD-R06**
Description: GRD-R06track



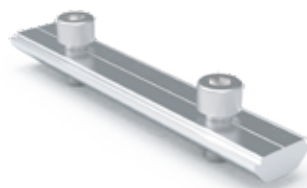
Model: **GRD-IC**
Description: GRD-Medium pressure



Model: **GRD-IC2**
Description: GRD-Medium pressure 2



Model: **GRD-R-SP**
Description: GRD-Track connector



Model: **GRD-R-SP2**
Description: GRD-Track connector 2



Model: **GRD-AE**
Description: GRD-Adjustable edge pressure



Model: **GRD-EC**
Description: GRD-Edge pressure



Model: **GRD-TP**
Description: GRD-T-bolt



Model: **GRD-BJ**
Description: GRD-Ground wire



Model: **GRD-G2-IC**
Description: GRD-G2 Medium pressure



Model: **GRD-G2-EC**
Description: GRD-G2 Edge pressure

ACCESSORIES



Model: **GRD-GW**
Description: GRD-Conductive Sheet



Model: **GRD-GL**
Description: GRD-Bottom line fixer



MC4
Extension cable



Photovoltaic cable
1.5mm2-35mm2



Model: **GRD-GW(G3)**
Description: GRD-Conductive Sheet(G3)



Model: **GRD-GW2**
Description: GRD-Conductive Sheet



MC4
Y-branch connector



MC4
Connector



Model: **GRD-CC5**
Description: GRD-clamp (1-2 Cables)



Model: **GRD-CC2**
Description: GRD-clamp (3-4 Cables)



MC4
2 branch connector



MC4
3 branch connector



Model: **GRD-CC4**
Description: GRD-clamp (1-2 Cables)



Model: **GRD-CC6**
Description: GRD-clamp (1-2 Cables)



Maintenance
access panel



Shock-absorbing
rubber mat

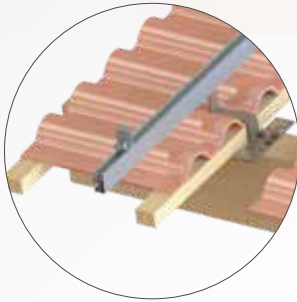


Cable tray

CERAMIC ROOF SUPPORT SYSTEM

Ceramic roof brackets are used to install framed and frameless solar panels on rooftops, suitable for commercial and residential roof systems.

Innovative design, pre-assembled parts and standard components, easy installation, saving your installation time and costs, different hooks can flexibly adapt to various roof tiles.



Edge pressing piece



Medium pressure parts



Hook piece



Track



Track Connector



GRD IK 01(A) Roof hook component



GRD IK 01 Roof hook component



GRD IK 02 Roof hook component



GRD IK 04 Roof hook component



GRD IK 05 Roof hook component



GRD IK 06 Roof hook component



GRD IK 07 Roof hook component



GRD IK 08 Roof hook component



GRD IK 09 Roof hook component

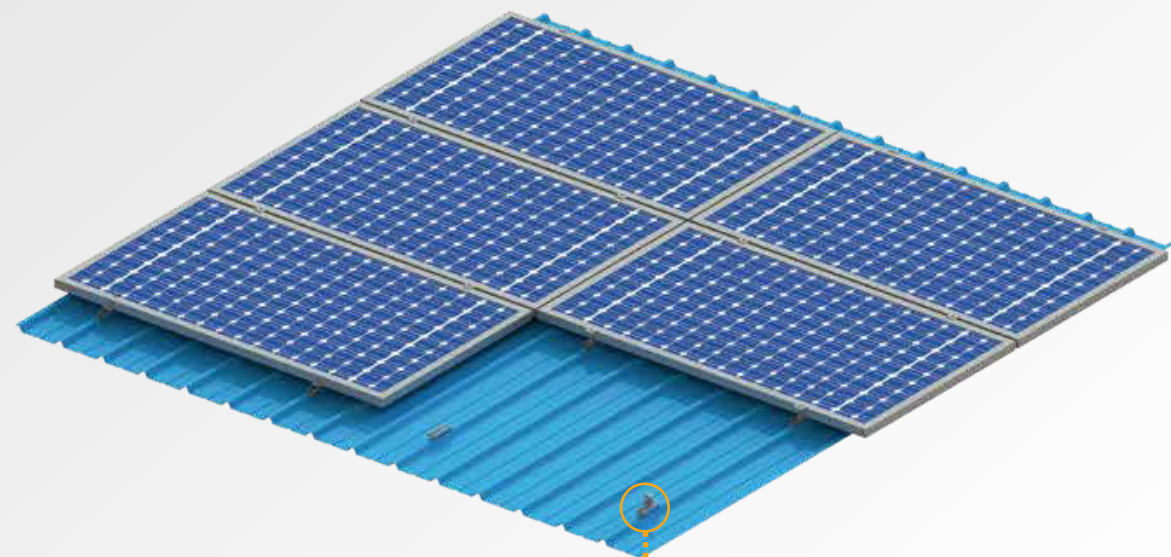


GRD IK 11 Roof hook component

TRAPEZOIDAL COLOR STEEL TILE ROOF SUPPORT SYSTEM

The bracket system belongs to small track solutions designed for trapezoidal metal sheet roofs. The mini track functions as both a track and a hook, allowing solar panels to be fixed directly onto the roof without the need for rails, saving installation time and making it suitable for large-scale installations.

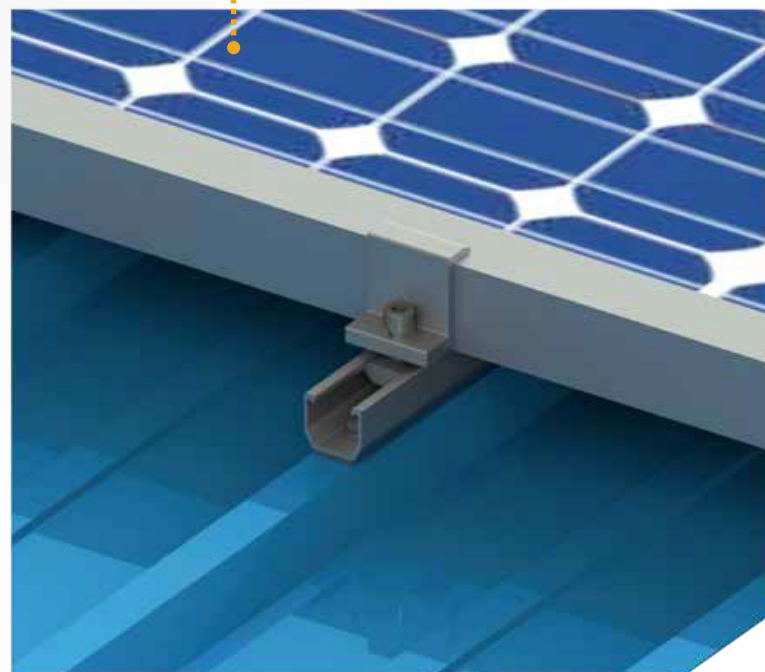
The installation position can be flexibly adjusted, unaffected by wave spacing, lightweight, reducing the load on the roof.



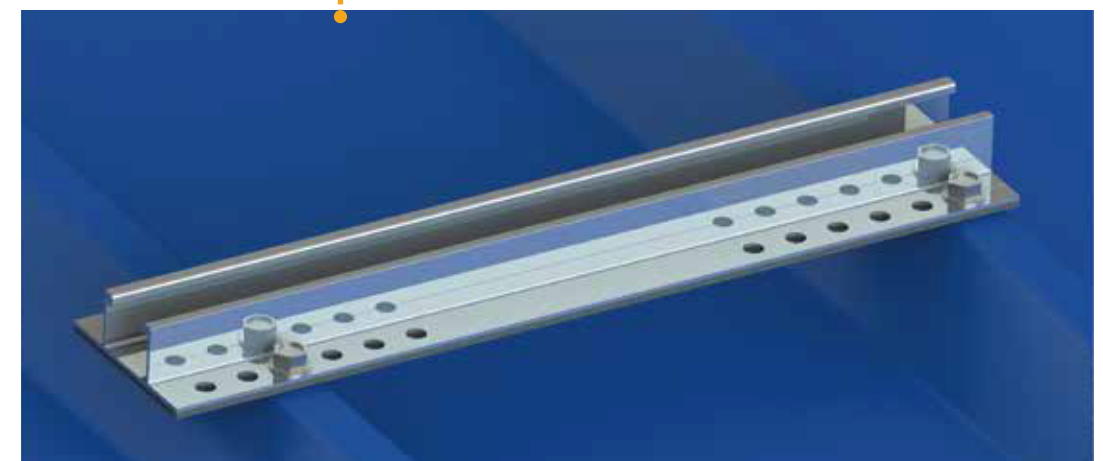
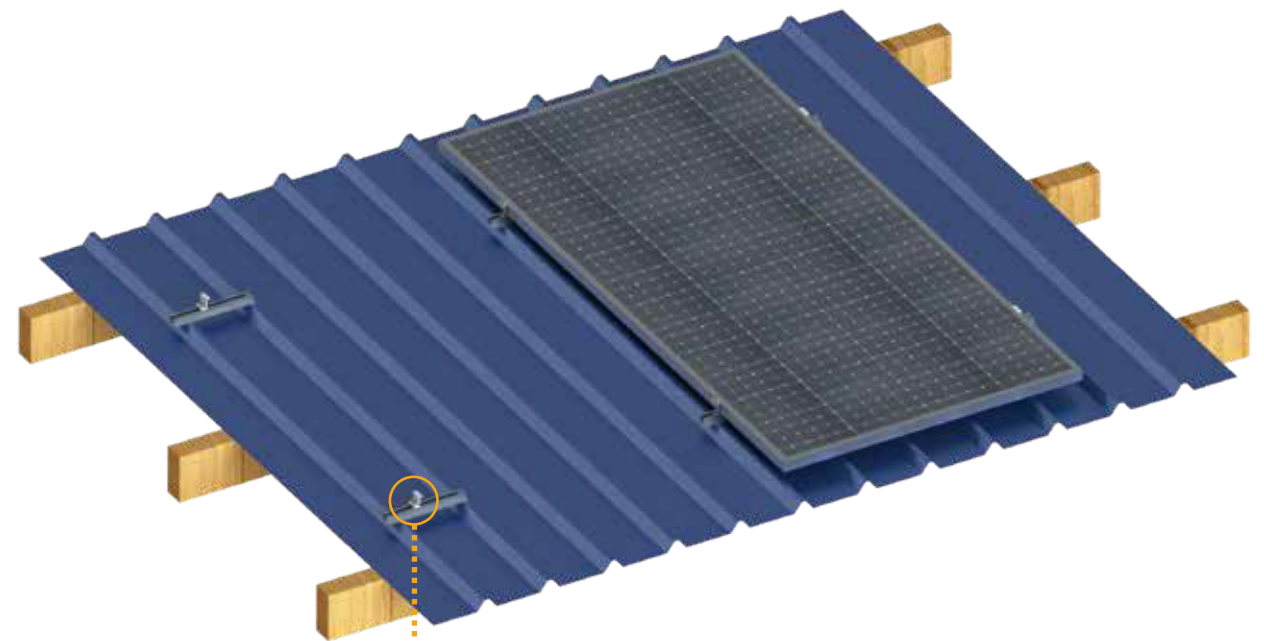
Medium pressure parts



Edge pressing piece



YJC POWER



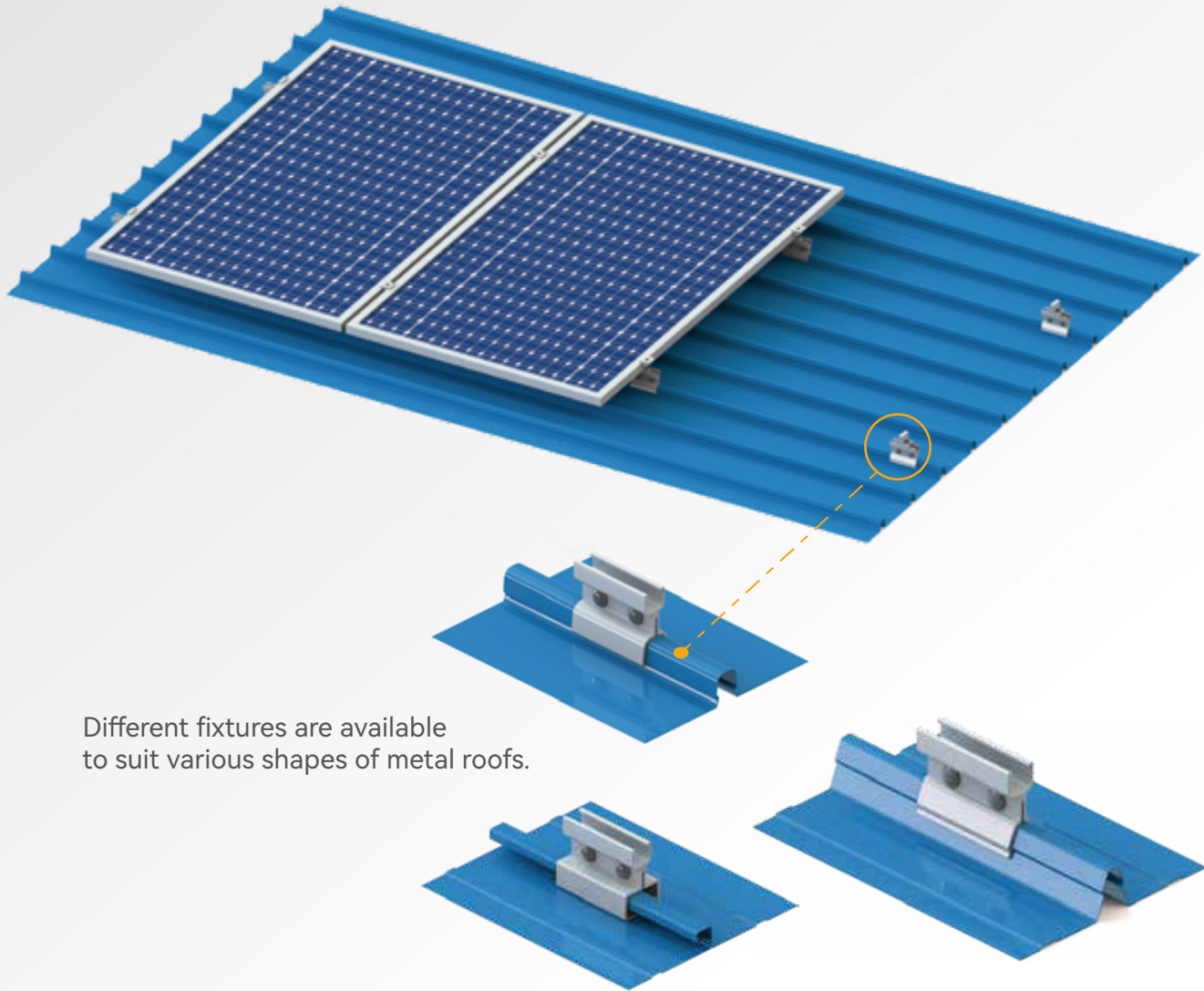
Medium pressure parts



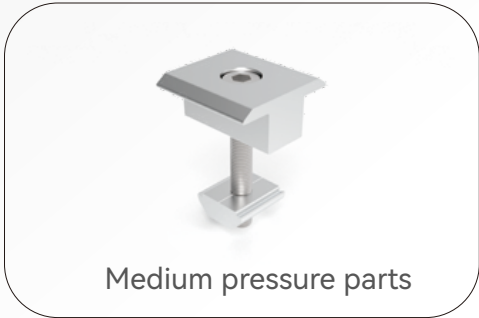
Edge pressing piece

COLOR STEEL TILE ROOF BRACKET SYSTEM

The color steel tile roof bracket system is suitable for large areas of color steel tile roofs. Depending on the different types of color steel tiles, it is equipped with aluminum alloy clamps, including standing seam type, angle type, snap type, and fixed connection type, to achieve the most stable installation effect. This fixing method does not damage the waterproofing of the original building and effectively integrates with the existing roof.



Different fixtures are available to suit various shapes of metal roofs.



Model: **GRD-TR-01**
Description: GRD-TR 01 Fixture



Model: **GRD-TR-03**
Description: GRD-TR 03 Fixture



Model: **GRD-TR-04**
Description: GRD-TR 04 Fixture



Model: **GRD-TR-08**
Description: GRD-TR 08 Fixture



Model: **GRD-TR-09**
Description: GRD-TR 09 Fixture



Model: **GRD-TR-10**
Description: GRD-TR 10 Fixture



Model: **GRD-TR-14**
Description: GRD-TR 14 Fixture



Model: **GRD-TR-16**
Description: GRD-TR 16 Fixture



Model: **GRD-TR-18**
Description: GRD-TR 18 Fixture



Model: **GRD-SS-09**
Description: GRD-SS 09 Fixture

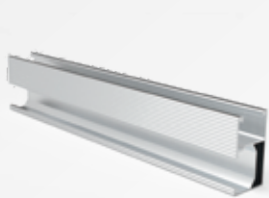
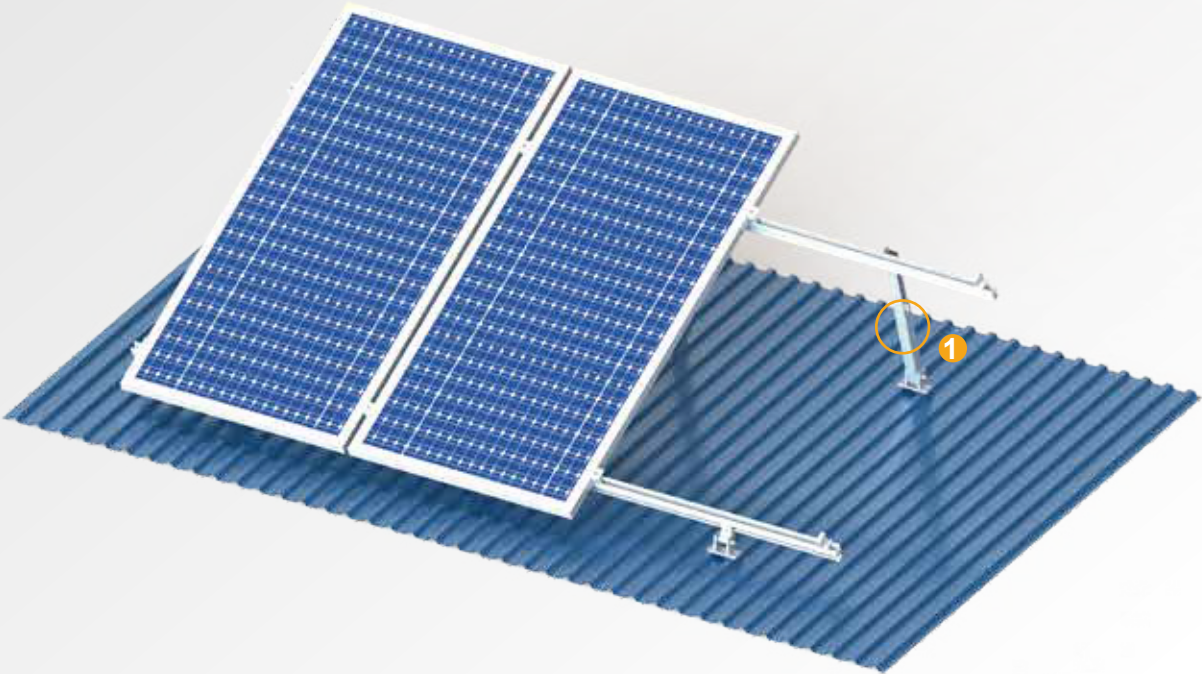


Model: **GRD-SS-05**
Description: GRD-SS 05 Fixture

FLAT ROOF SUPPORT SYSTEM - ADJUSTABLE TRIPOD

The adjustable flat roof bracket system can flexibly adjust the panel angle, increasing the power generation capacity at different times by adjusting the height of the rear legs.

Less ballast per square meter reduces costs.



track



Edge pressing piece



Medium pressure parts



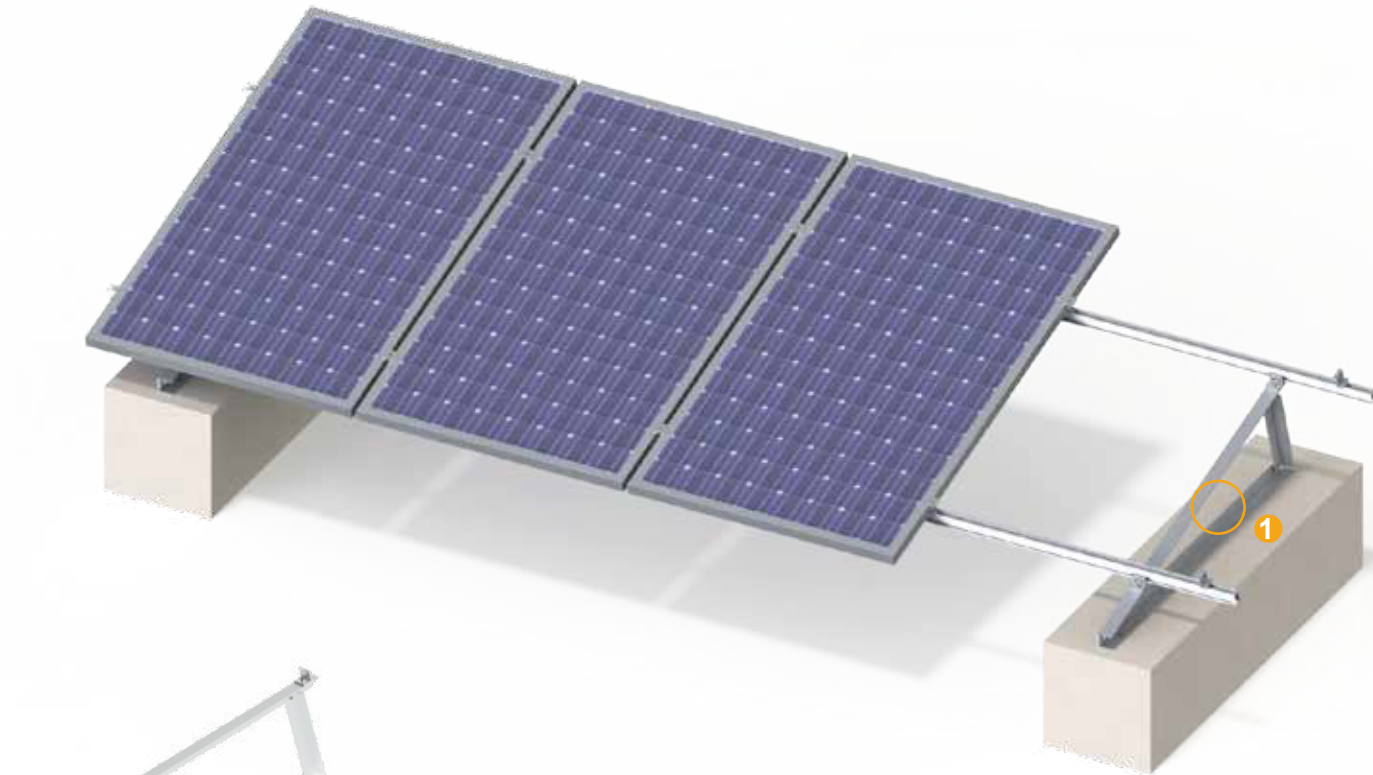
Adjustable bracket front leg



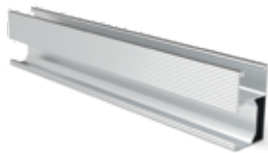
1 Adjustable support rear leg

Model	Angle	Adjustable length
GRD-RL-10/15	10-15deg	250-280mm
GRD-RL-15/30	15-30deg	370-400mm
GRD-RL-20/40	20-40deg	500-530mm
GRD-RL30/60	30-60deg	710-740mm

FLAT ROOF SUPPORT SYSTEM-FIXED TRIPOD



1 Support frame



track



Edge pressing piece



Medium pressure parts



Fixture

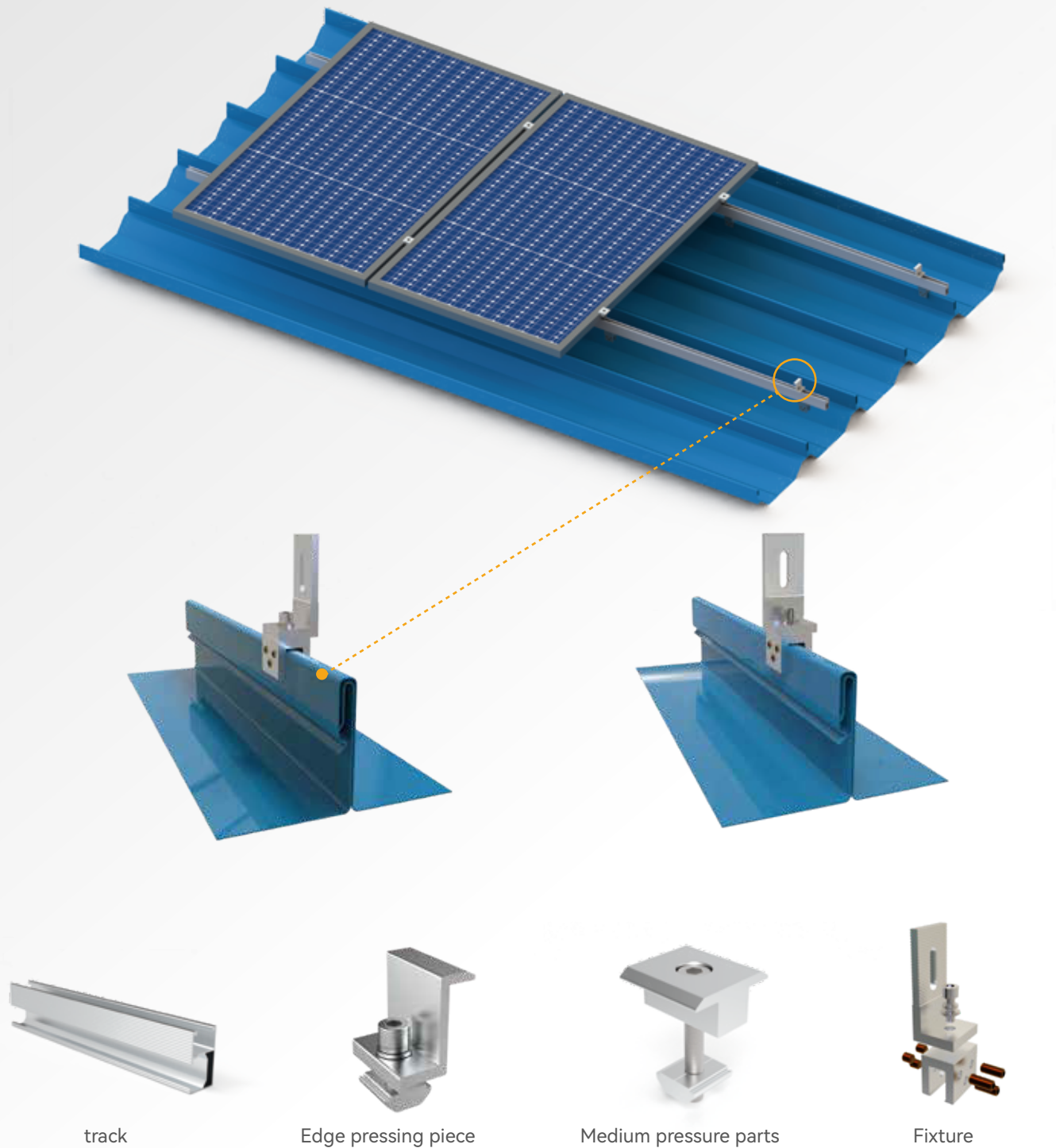


Pressurized adjustable support frame pre-assembly, saving labor costs.

Model	Angle
GRD-TM-frame-10/15	10-15deg
GRD-TM-frame-15/30	15-30deg
GRD-TM-frame-20/40	20-40deg
GRD-TM-frame-30/60	30-60deg

STANDING SEAM COLOR STEEL TILE ROOF SUPPORT SYSTEM

The standing seam color steel tile roof bracket system is a specialized clamp kit designed for non-permeable color steel tile roofs, which does not damage the roof while maintaining its integrity and offers better waterproofing. It eliminates the need for traditional L-shaped feet, requiring only bolt fixation, which saves labor costs and reduces material usage during installation. The use of Guoruide's highly pre-assembled structural accessories makes the installation process more straightforward.



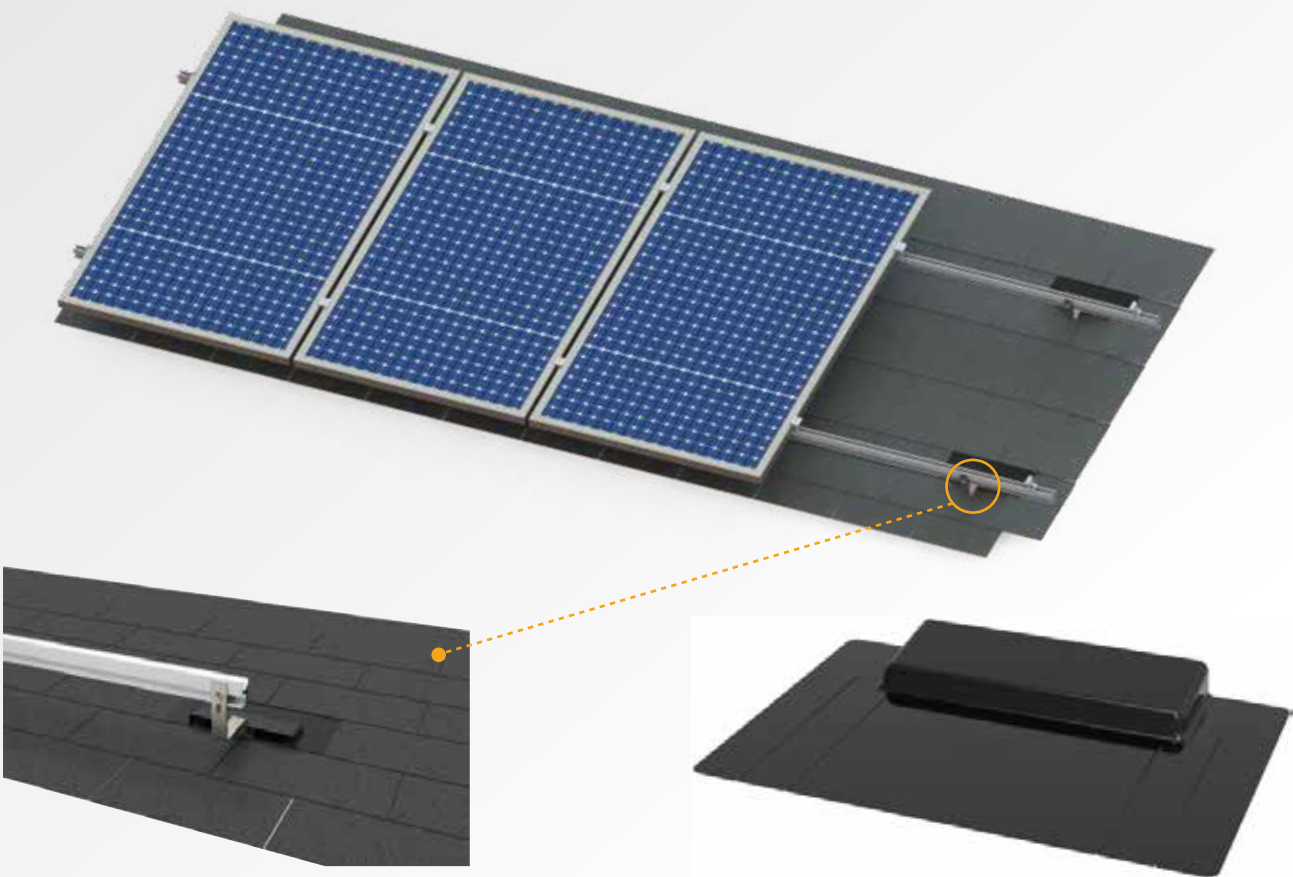
ASBESTOS/METAL ROOF BRACKET SYSTEM

The asbestos/metal roof support system features an innovative guide rail, standard fittings, and highly pre-assembled clamps design, making installation simple and flexible.



ASPHALT ROOF SUPPORT SYSTEM

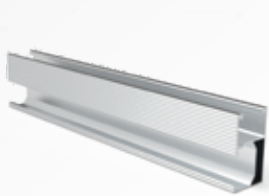
The asphalt roof bracket is designed for waterproof asphalt shingle roofs, and it is an effective solution for separated packages. The waterproof boards effectively prevent water leakage from the roof.



Awning hook component



Waterproof board



track



Edge pressing piece

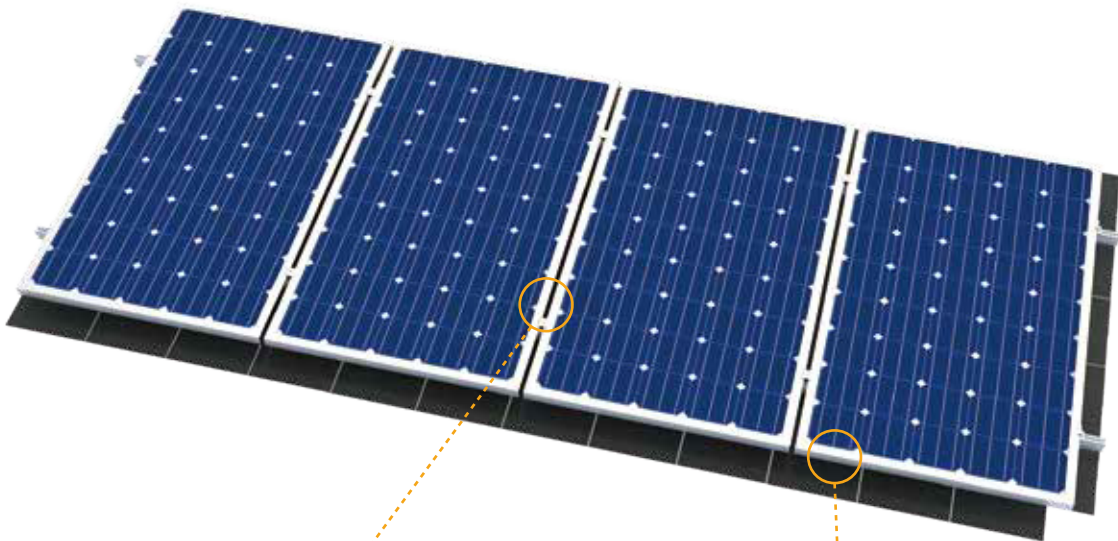


Medium pressure parts

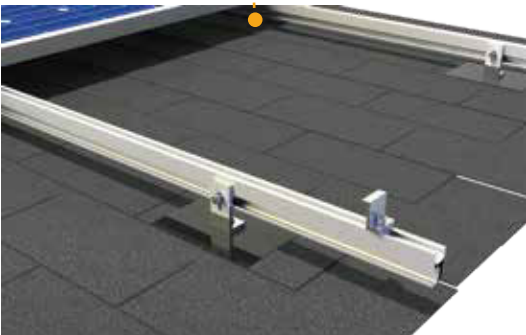


Hook piece

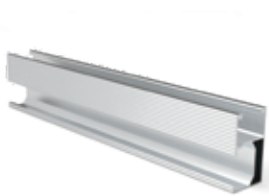
ASPHALT ROOF BRACKET SYSTEM - L BRACKET



Fix the L-shaped leg and the waterproof board to the beam with bolts.



Fix the rail to the L-bracket kit.



track



Edge pressing piece



Medium pressure parts



L Bracket

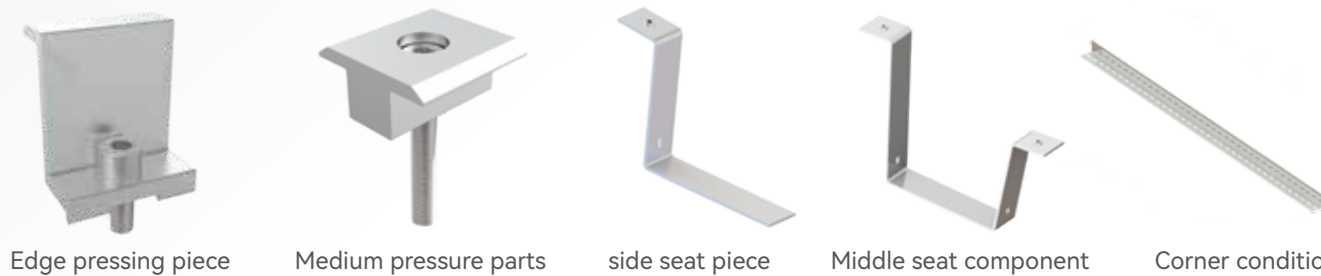
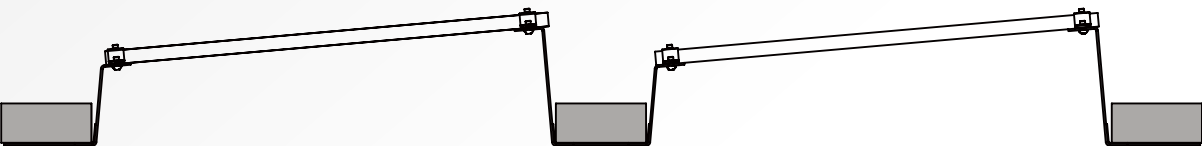
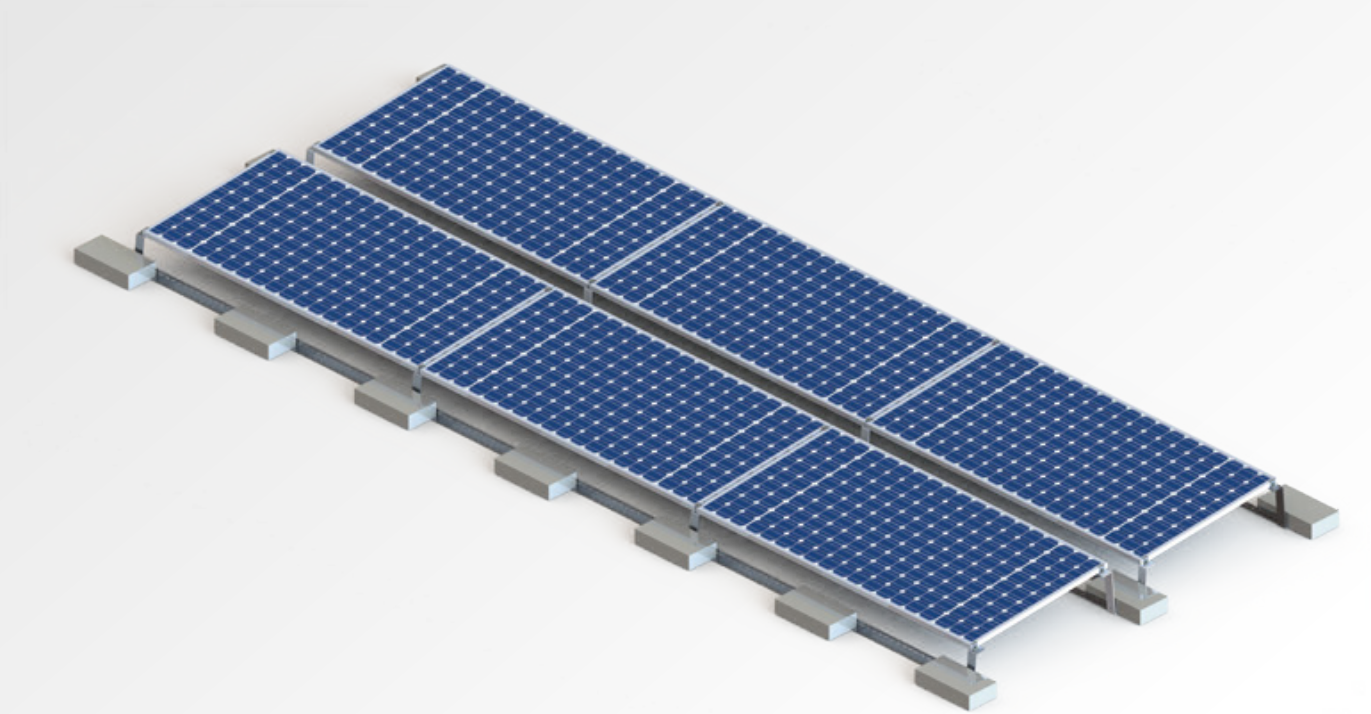


Waterproof board

SEVERAL WORDS FOR BALLAST

BRACKET SYSTEM---SOUTH DIRECTION 5°-15°

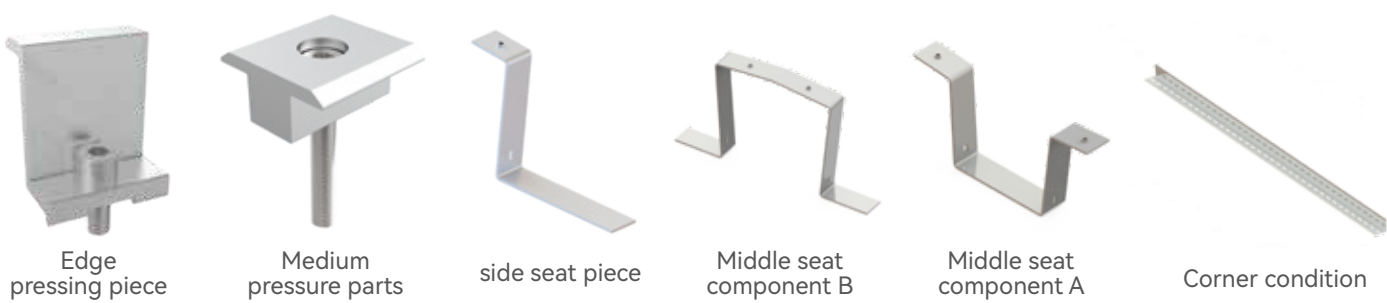
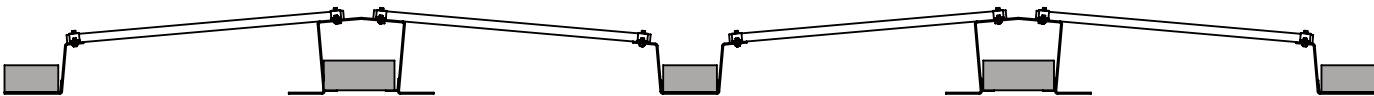
This is a south-facing pneumatic flat roof fastening system, including a pre-assembled PES building protection mat for framed solar panels. It can have an angle of inclination ranging from 5° to 15°, and various inter-row spacings, and can also be available as a high mountain version.



SEVERAL WORDS FOR BALLAST

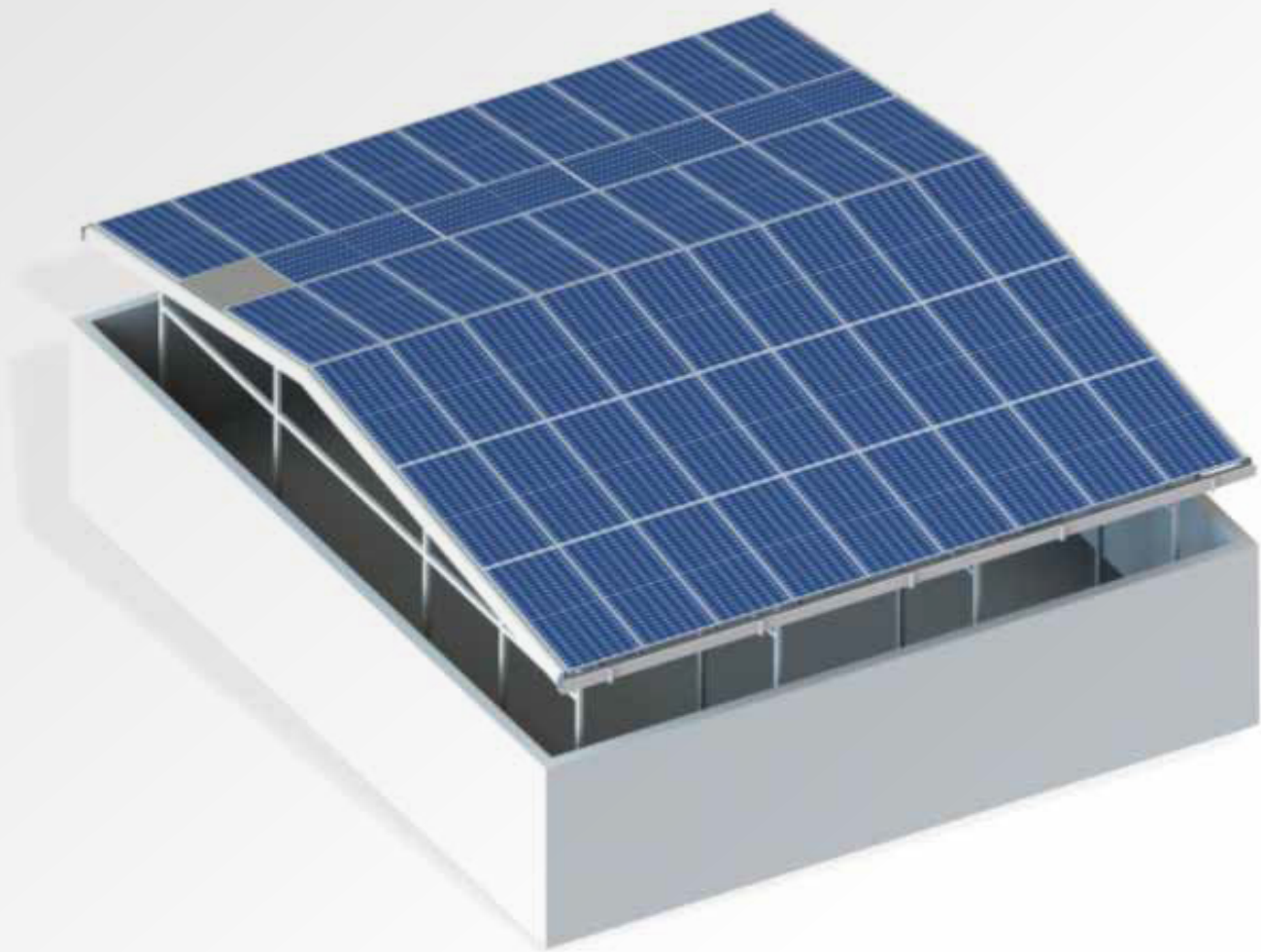
BRACKET SYSTEM --- EAST-WEST 10°

The flat roof's A-shaped ballast support system solution is suitable not only for solar panels with a southward tilt angle of 5° to 15° but also for solar panels with an east-west tilt angle of 10°.



BIPV – BUILDING-INTEGRATED PHOTOVOLTAICS

The patented waterproof installation structure does not require sealing strips and sealing glue, with gaps between components as small as 1-5mm, greatly improving area utilization. There is also a main water trough and a horizontal waterproof trough located beneath the support, completely eliminating the risk of leakage.



Advantage

1. A high-quality drainage system that can handle 250mm of rainfall.
2. The spacing between the lower columns is large enough to provide sufficient movement space for the customers.
3. Can effectively reduce roof temperature.
4. The structure can be installed from the bottom, ensuring high construction safety.
5. High-quality overlocking to ensure the overall frame is aesthetically pleasing.



Central Connection



End connection



Main water tank connection



Small sink connection



Horizontal bracket connection



Sink Lock Block



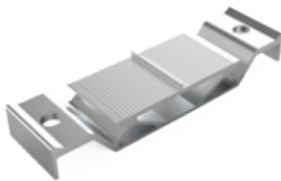
Horizontal groove



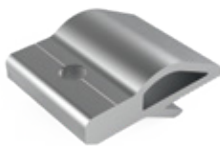
Gutter



Gutter support frame bridge seat



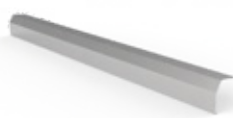
Bridge seat



Bracket lock block



Main water tank



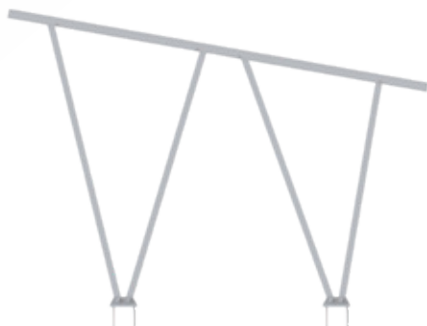
Side component

BIPV – BUILDING-INTEGRATED PHOTOVOLTAICS

The BIPV waterproof carport is a derivative of BIPV photovoltaic building integration, suitable for the installation of photovoltaic modules in industrial and commercial applications. The GRD BIPV waterproof carport retains the functions of traditional photovoltaic carports, effectively enhancing space utilization. It adopts an aluminum alloy support structure with a waterproof design, eliminating traditional metal sheet waterproofing, and utilizes a new M-shaped drainage system, resulting in lower maintenance costs and a longer system lifespan.



Y-type rod



W-type rod



Foot base connection



Track connection



Main water tank connection



Oblique beam and column connection



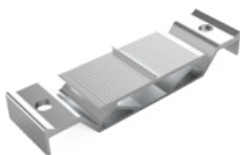
Small sink connection



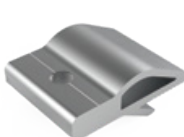
End connection



Central Connection



Bridge seat



Bracket lock block



Main water tank



Side component



Horizontal groove



Gutter

BIPV STEEL STRUCTURE CARPORT

GRD BIPV patent waterproof structure, steel structure carports have high strength and good wind and earthquake resistance, with a corrosion-resistant surface treatment. Multi-parking space carports, mostly modular in design, can be used individually or combined in various ways, facilitating expansion from several parking spaces to hundreds, with strong flexibility and lower overall costs.

Double-column Steel Structure Waterproof Car Shed



Single-column steel structure waterproof car shed



Central Connection



End connection



Main tank connection



Small sink connection



Horizontal bracket connection



Purlin connection



Main column



Slant beam



Purlin



Main water tank



Side component



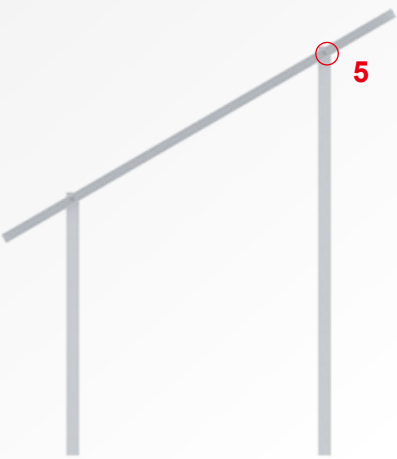
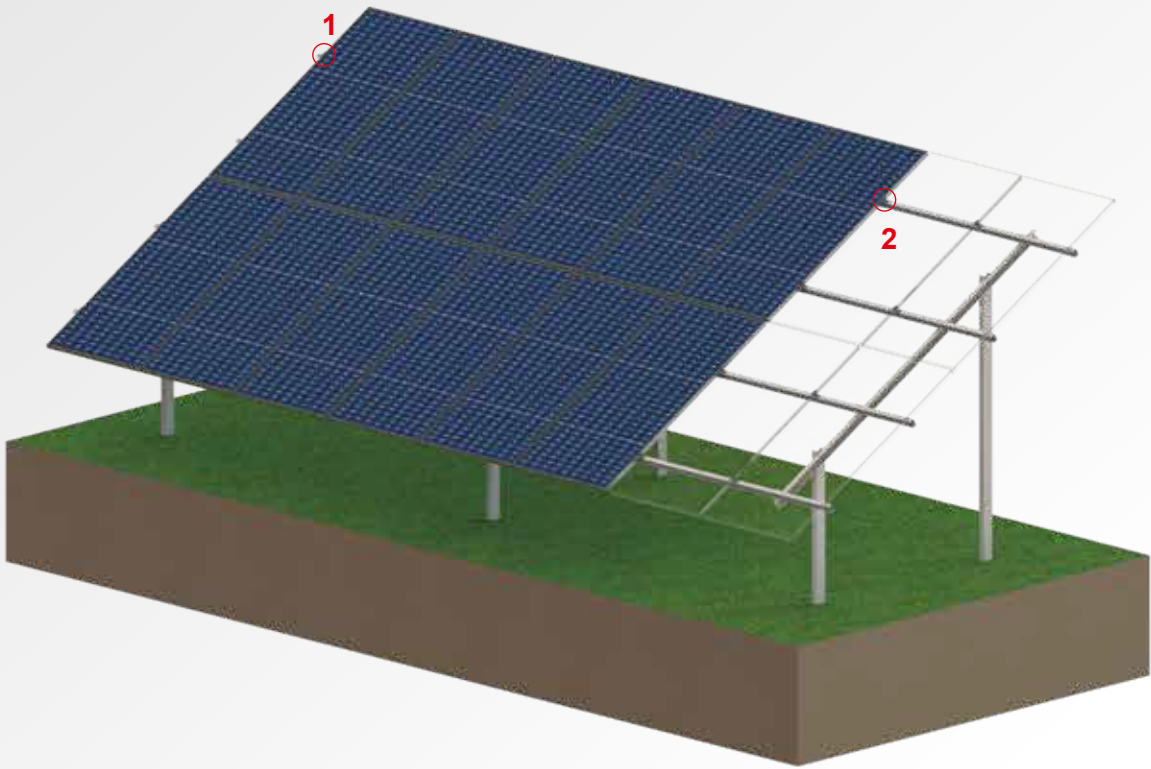
Horizontal groove



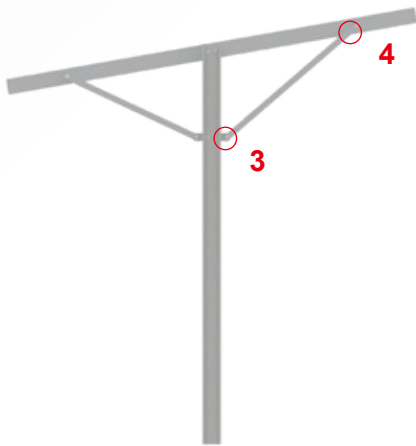
Gutter

ZINC-ALUMINUM-MAGNESIUM GROUND SUPPORT SYSTEM

Zinc-aluminum-magnesium coated steel plates refer to coated steel plates that have a certain amount of Al and Mg elements added to the existing hot-dip galvanized coating or that have a certain amount of Mg elements added to the hot-dip aluminum-zinc coating. They feature high corrosion resistance and self-repairing edge protection, offering corrosion resistance that is 5 to 10 times greater than that of galvanized plates. Zinc-aluminum-magnesium photovoltaic brackets possess high strength and rigidity, capable of withstanding significant loads and wind pressure.



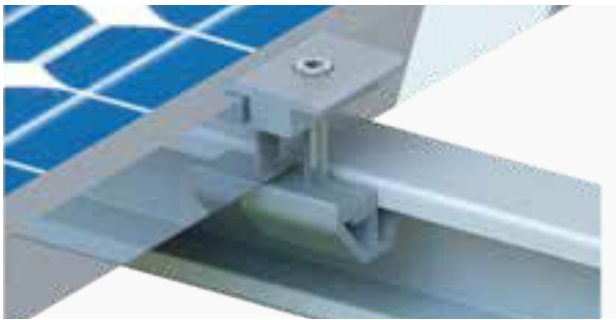
双立柱



单立柱



1 Edge pressure connection



2 Medium pressure connection



3 Column brace connection



4 Slanted beam and brace connection



5 Slant beam column connection

Product Name	Zinc-aluminum-magnesium ground photovoltaic bracket
Material	S350GD, AL6005-T5, SUS304
Component Arrangement	Horizontal and vertical
Thickness of solar panels (mm)	30-50mm
Adjustable angle range	0-60°
Application	Open fields, mountains, clearings, etc.
Maximum wind speed	60 m/s
maximum snow load	2.5 kN/m ²



Edge pressing piece



Medium pressure parts



Track



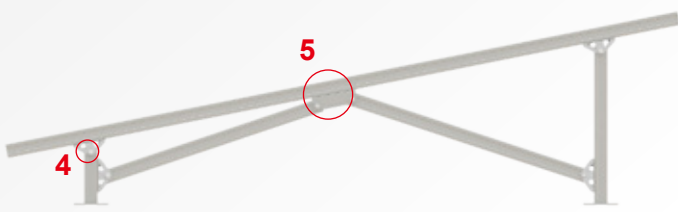
Track connector



purlin support

ZINC ALUMINUM MAGNESIUM GROUND SUPPORT SYSTEM

The GRD-G200 ground mounting system is suitable for open ground installation, using zinc-aluminum-magnesium S350GD material which has low installation costs, high strength, and corrosion resistance.



W-shaped bracket



N-shaped bracket

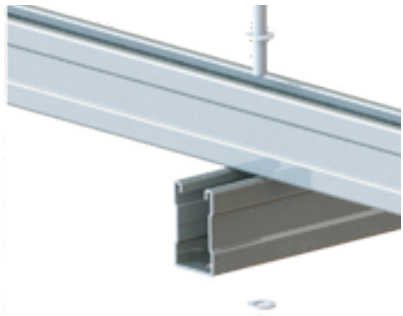
YJC POWER



1 Edge compression connection



2 Medium pressure connection



3 Track slant beam connection



4 Slant beam column connection



5 Sloped beam and brace connection



6 Column diagonal brace connection

Product Name	Zinc-aluminum-magnesium ground photovoltaic bracket
Material	S350GD, AL6005-T5, SUS304
Component Arrangement	Horizontal and vertical arrangement
Thickness of solar panels (mm)	30-50mm
Adjustable angle range	0-60°
Application	open fields, mountainous areas, clearings, etc.
Maximum wind speed	60m/s
Maximum snow load	2.5KN/m ²



Track



Track connector



Footrest



Post



Beam connector



Triangular connector



Medium pressure parts

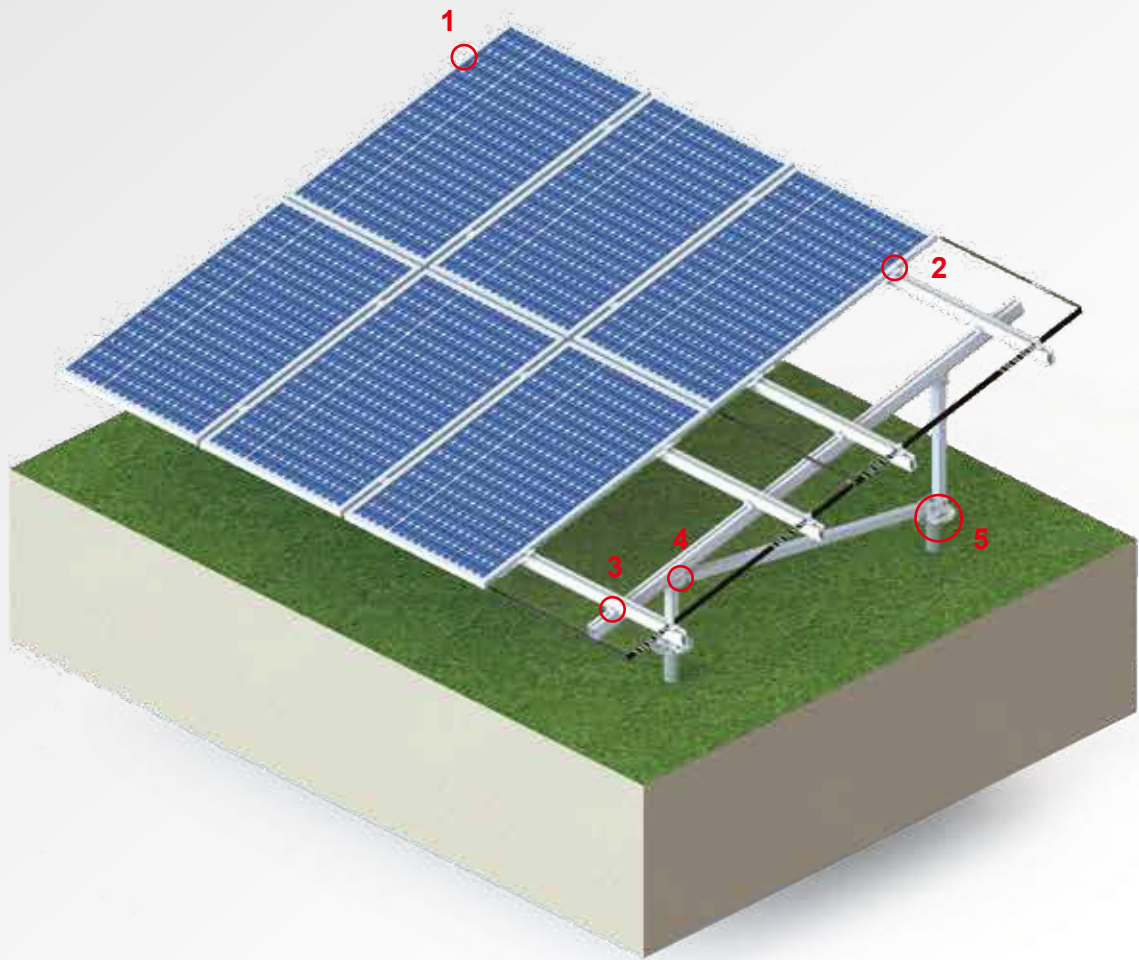


Edge pressing piece

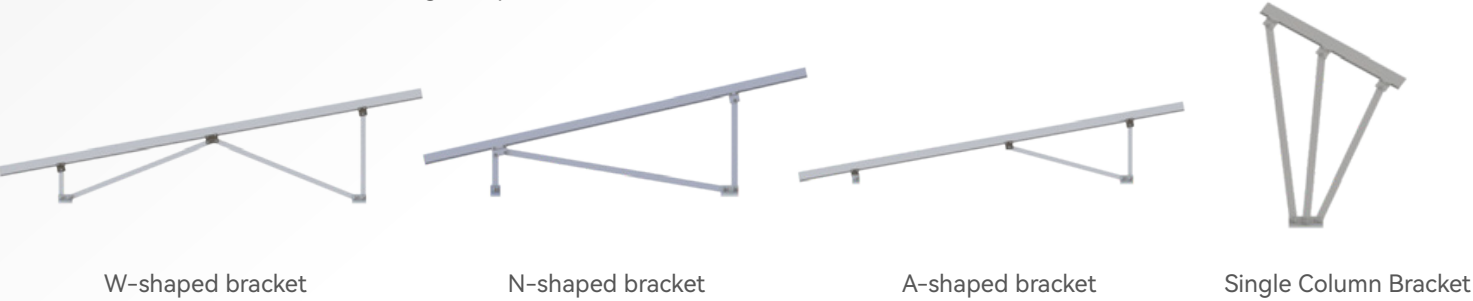
ALUMINUM ALLOY FLOOR SUPPORT SYSTEM

Aluminum alloy solar ground mounts are suitable for outdoor sites; they are applicable not only for residential projects but also for large commercial projects and are compatible with both framed and unframed panels.

Aluminum solar brackets are characterized by their lightweight, sturdy, and recyclable properties. Equipped with pre-assembled brackets, they save installation time and labor costs.



Different structures have different strength requirements.



1 Medium pressure parts

2 Edge pressing piece



3 Rail Connections

4 Sloped beam connection

Product Name	Aluminum alloy ground photovoltaic bracket
Material	AL6005-T5, SUS304
Component Arrangement	Horizontal and vertical
Thickness of solar panels (mm)	30-50mm
Adjustable angle range	0-60°
Application	Open fields, mountains, clearings, etc.
Maximum wind speed	60 m/s
maximum snow load	2.5 kN/m ²



5 Foot connector

Slant beam

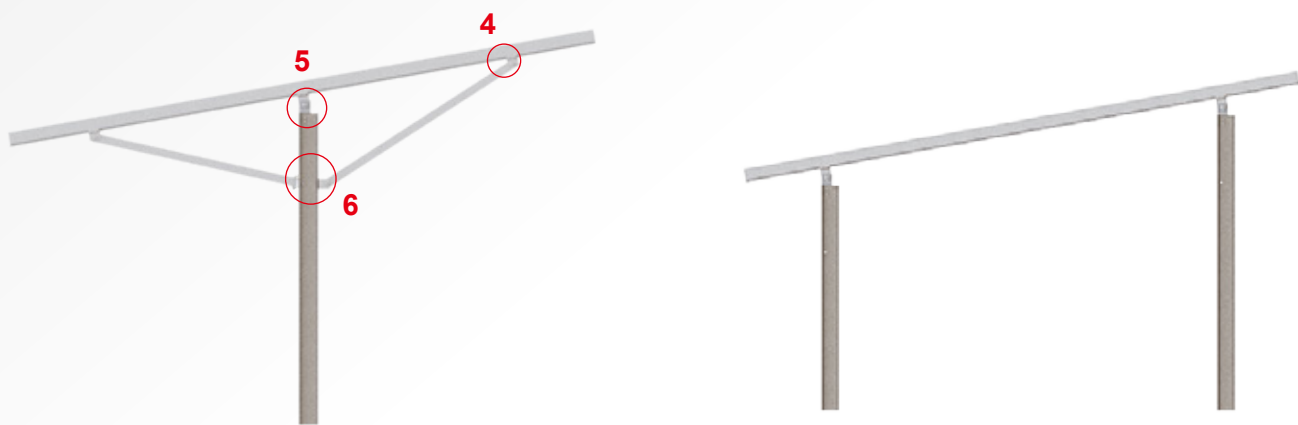
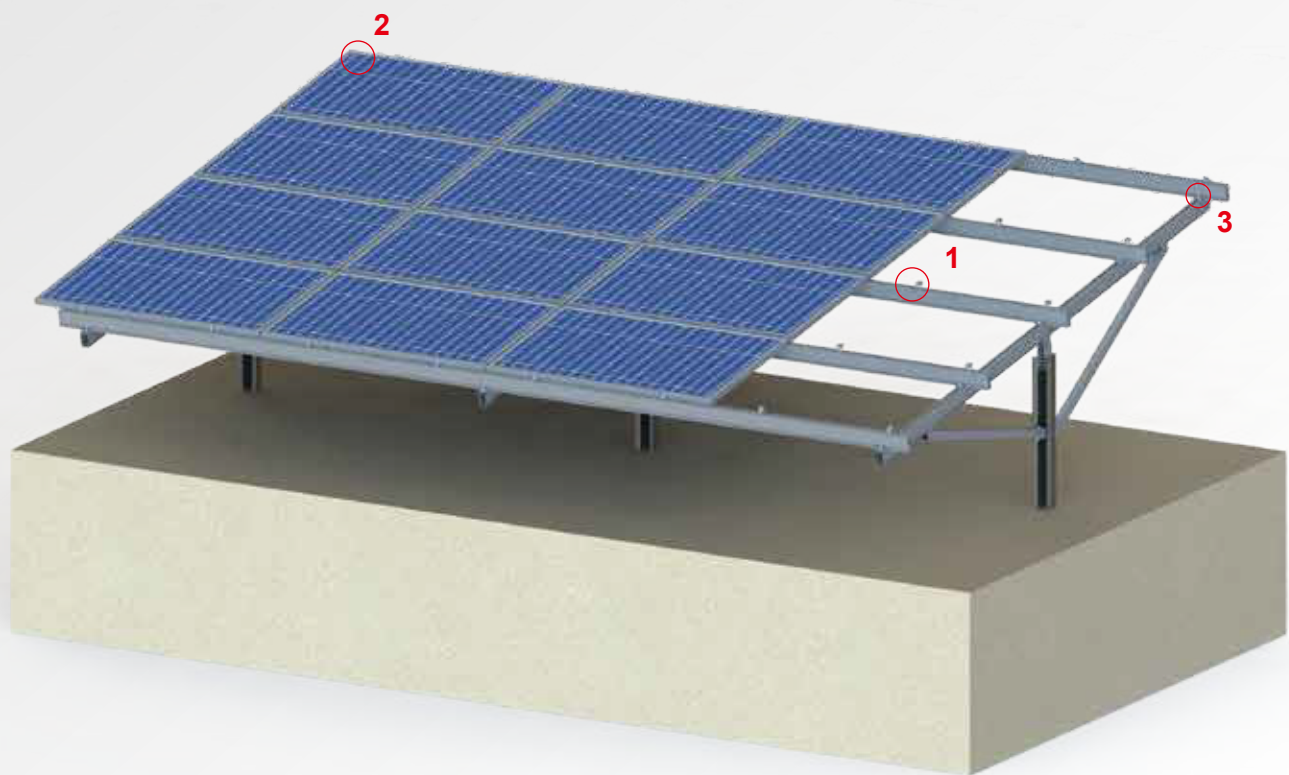
Column

track

Rail connector

STEEL + ALUMINUM ALLOY PILE GROUND SUPPORT

Steel + aluminum alloy pile ground support is suitable for large solar farms, using a design of steel + aluminum alloy inclined beam rails, requiring no anchor bolts or concrete foundations, with columns firmly grounded as pile feet.



Single-column

Double column



1 Medium pressure parts



2 Edge pressing piece



3 Rail connection



4 Sloped beam and brace connection



5 Connection of inclined beams and columns



6 Column Bracing Connection

Product Name	Steel + Aluminum Alloy Photovoltaic Support Frame
Material	AL6005-T5, SUS304
Component Arrangement	Horizontal and vertical
Thickness of solar panels (mm)	30-50mm
Adjustable angle range	0-60°
Application	Open fields, mountains, clearings, etc.
Maximum wind speed	60 m/s
maximum snow load	2.5 kN/m ²

ADVANTAGE

1. Use high-quality zinc-aluminum-magnesium corrosion-resistant materials.
2. The cost of material usage and installation is the lowest.
3. Installation is more flexible.



Medium pressure parts



Edge pressing piece

HELICAL PILE

The ground anchor bolts are made of Q235 material and are available in two types: flange top and pipe top. The screw thickness options are 2.5mm, 2.75mm, 3mm, and 3.5mm, with lengths of 1200mm, 1600mm, 1800mm, 2000mm, or customizable.

Applicable to many different types of applications, such as time frame structures; advertising and traffic systems; urban, garden and landscape construction; halls and container buildings; fencing systems; solar systems; flagpoles and banners, etc.



ADVANTAGES

1. WIDELY APPLIED
Different types of ground anchor heads can be selected according to customer needs.
2. EASY TO INSTALL
The installation, disassembly, and reinstallation of the Guoruid ground bolts are easier and faster than other foundations. This can reduce environmental impact and minimize removal costs.
3. STABILITY AND SECURITY
Various types of ground anchors can be selected for static load analysis and testing to ensure the safety of the foundation.
4. ENVIRONMENTALLY FRIENDLY
There is no need for a cement foundation, so the surrounding areas will not be damaged.
5. COST SAVING
The special configuration of the Guorui De ground anchors can be inserted without the need for land preparation work, greatly reducing costs.
6. CATHODIC PROTECTION AGAINST CORROSION
The surface of the Guoruidi anchor bolt is treated with heat treatment and coated with zinc for anodic protection to prevent electrochemical corrosion, thereby providing better corrosion resistance.

Serial Number	Model	Material	Surface	Diameter	Galvanized surface	Thickness	Height
1	F76*L-2	Q235	Hot-dip galvanizing	76mm	≥80 μm	3.5mm 3.0mm 2.75mm 2.5mm	Custom
2	F76*L-4						
3	F76*L-4L						
4	F76*L						
5	F76*L-A						
6	N76-L						

BALCONY BRACKET SYSTEM

The ground anchor bolts are made of Q235 material and are available in two types: flange top and pipe top. The screw thickness options are 2.5mm, 2.75mm, 3mm, and 3.5mm, with lengths of 1200mm, 1600mm, 1800mm, 2000mm, or customizable.

Applicable to many different types of applications, such as time frame structures; advertising and traffic systems; urban, garden and landscape construction; halls and container buildings; fencing systems; solar systems; flagpoles and banners, etc.



ADVANTAGE

- Fast and easy to install.
- Manually adjust the tilt angle to generate more power.
- Pre-assembled parts save installation time and labor costs.
- Lightweight and aesthetically pleasing.
- Custom services are available.

Product Name	Balcony bracket system
Material	AL6005-T5.SUS304
Length of solar panels (MM)	≤2279mm
Width of solar panels (MM)	834mmsXs1134mm
Thickness of solar panels (MM)	30-50mm

Adjustable angle range	30-50°
Application	Balcony, wall, open space, etc.
Maximum wind speed	50m/s
Maximum snow load	1.5 kN/m²



Main bracket



Stainless steel hook



U-bolt set

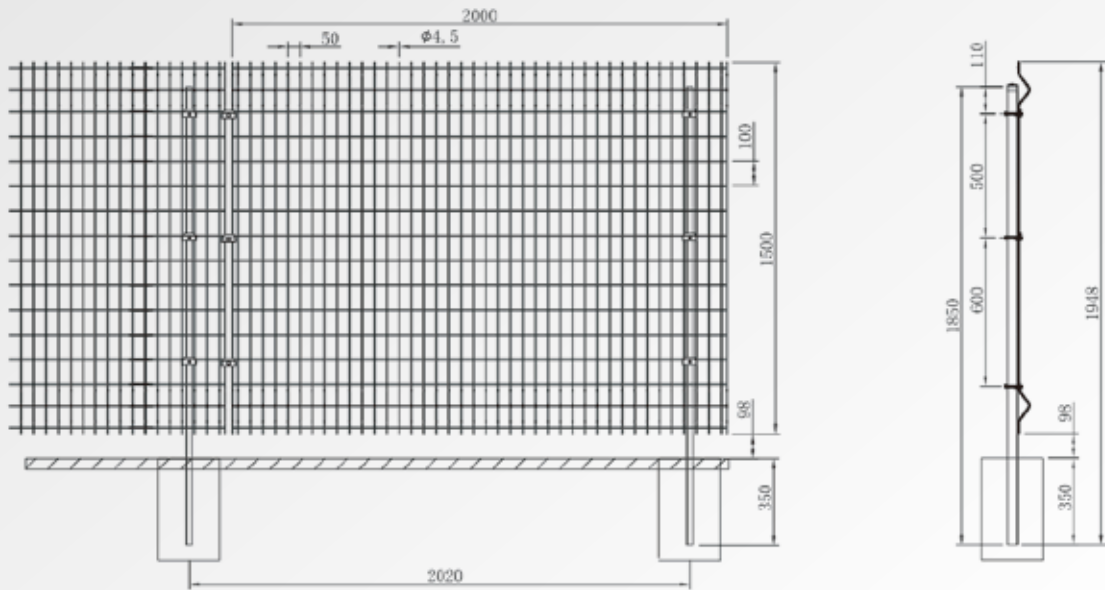


Reinforcement Bar

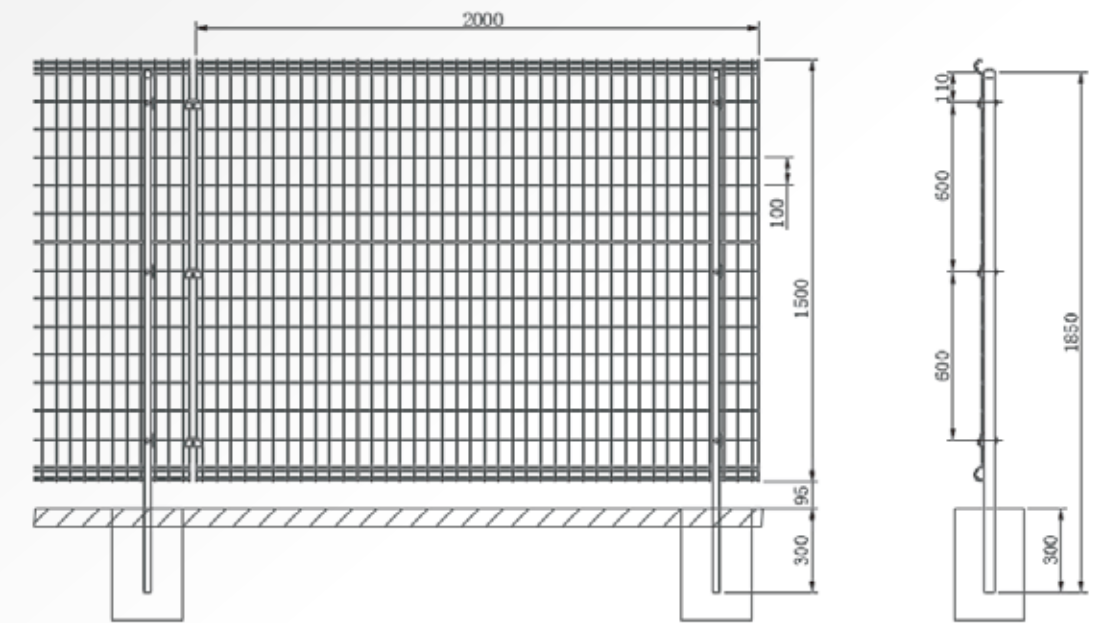
GUARDRAIL

With the increasing development of the photovoltaic industry, a large number of photovoltaic devices need to be effectively protected and isolated. As one of the basic infrastructures, the demand for fences is also gradually increasing.

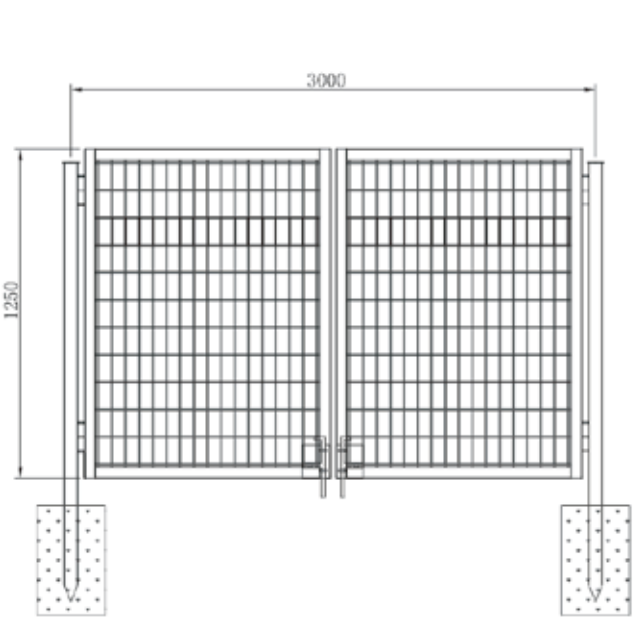
The guardrail is made of high-quality low-carbon steel wire as raw material, with complete specifications, easy to install and recycle, and can be customized as needed.



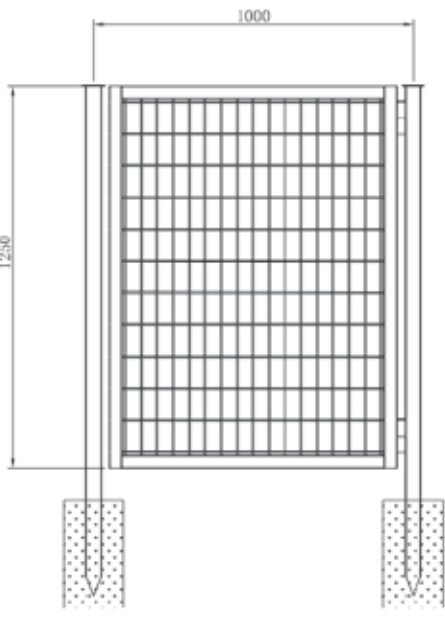
Bending Guardrail



Half-circle railing



Double door



Single door

Color	White, Green, Gray
Surface	PV coating
Railing size	Width 2.0m, Height: 0.8m, 1.0m, 1.2m, 1.5m, 1.8m
Column diameter	38mm, 48mm, Thickness 2.0mm
Wire diameter	3.5mm, 4.0mm
Foundation	Concrete foundation, anchor bolts, pile-in type
Fence post connection	Fastener Connection
Bolt Material	0235-A, SUS304

Barrier height (mm)	Guardrail width (mm)	Grid Size (mm)
800	2000	75X150
1000		100X150
1200		150X150
1500		
1800		

